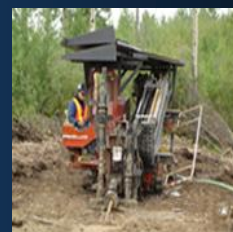
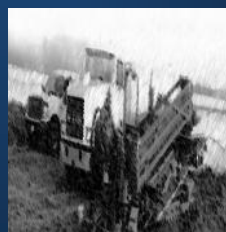
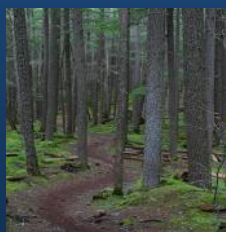




HIGH ENERGY



horizontal directional drilling inc.

Drilling Services

Top Service... Best Value

High Energy offers HDD services for all sorts and sizes of crossings. Our management and field staff have extensive experience in a wide range of soil conditions and the various tooling that is required to drill in those conditions. To the right is an outline of the different capabilities we offer.

- Mud-motor ready and experienced.
- 15 years experience in all sizes and types of HDD projects.
- Technologically cutting edge electronics and Equipment.
- CAD As built drawings
- HDD Design, Analysis, And Consulting.
- Top Notch Client Care Program
- Multiple Crossing Discount Program

Whether you are crossing a street with a 1" line or crossing a major river with a 36" line, we can get your project moving. Through our corporate partnership with Precise Crossings of Spruce Grove, we can handle just about any crossing project thrown our way.

*All crossings are unique. Therefore we would love to hear about your project and provide a quote for you based on your information.

No matter how big or how small the project, our attention to detail and client care always measure up.

High Energy Horizontal Directional Drilling Inc.
5108-50th Avenue, Wetaskiwin, Alberta

1-877-352-4727 [Free](tel:1-877-352-4727) - 780-352-4757 [Fax](tel:780-352-4757) - info@highenergyinc.ca [Email](mailto:info@highenergyinc.ca) - www.highenergyinc.ca [Web](http://www.highenergyinc.ca)

Crossing Safely

High Energy's safety program and record speak for themselves. Namely... no lost time accidents - ever! Since the company's start up in 2005, High Energy has been pleased to see our COR compliant program is performing to the standards in place for it.

Injury Statistics

Year	Number of LTA's (Lost Time Accidents)
2007	0
2006	0
2005	0

- COR Recognized Safety Program (COR# 20070510-4007)

- Unmatched safety record.

- Professionally monitored and audited safety program

- Employee safety awards program encourages top safety performances.

- Employee driven program ensures 'real life', on site concerns are being addressed.

- Thorough safety documentation throughout job-copies handed over at regular intervals.



CERTIFICATE
OF
RECOGNITION

This certificate recognizes that
HIGH ENERGY HORIZONTAL DIRECTIONAL DRILLING INC.

In keeping with the principles of *Partnerships* has:

- developed and implemented a workplace health and safety management system and,
- met the standard for *Partnerships* through an independent evaluation of their health and safety system.


ENFORM
Partner in Health and Safety
Certificate # 20070510-4007
WCB Industry Code(s): 42103


Joe Childs
Director, Workplace Partnerships
Expiry Date: May 10, 2010


Alberta
Employment, Immigration
and Industry

High Energy Horizontal Directional Drilling Inc.
5108-50th Avenue, Wetaskiwin, Alberta

Management Team

People Power

High Energy has created an environment where our clients reap the benefits of our past experience. With a combined HDD experience of 30 years among the management group, High Energy has seen just about every situation a crossing has to offer.

John Parker-Business Manager

John has a varied experience within the HDD industry. Gaining a solid foot in the door in the expanding Alberta HDD market in the 1990's, John then moved on to continue his HDD apprenticeship in more established locations including other large market locations all along the West Coast; from Vancouver to California. A desire to bring client care to the forefront of HDD is what drives John to continue growing High Energy toward its potential.

Dave Parker-Operations Manager

Dave also started his HDD career in the expanding Alberta market and has never turned back. After an extended stay in the conventional pipeline business (gaining valuable client feedback), Dave is once again fully immersed in the HDD industry. Dave is High Energy's chief presence in the field and brings his full organizational, motivational, and client care skill set to every location.

- 15 years experience in all types of HDD projects.

- Management group dedicated to the 'Client Care' principal.

- Extensive ownership involvement fosters a high standard of workmanship.

High Energy Horizontal Directional Drilling Inc.
5108-50th Avenue, Wetaskiwin, Alberta

1-877-352-4727 [Free](#) - 780-352-4757 [Fax](#) - info@highenergyinc.ca [Email](#) - www.highenergyinc.ca [Web](#)

Equipment

Tools of the Trade

High Energy believes in the value of quality, well maintained equipment. Right from our drilling rigs themselves, down to a hammer handle, our maintenance program ensures that our equipment will be as ready to get your job done as we are.

Unit Number	Description of Equipment
2700	Ditch Witch JT-2720 Mach1 Directional Drill. This highly efficient setup is powered by a 125hp John Deere diesel engine. Features such as the automatic pipe-loader and all terrain track system improve the versatility and performance of this rig.
2701	This unit is a truck with insulated van which houses the FM13 Mud-management system. FM13 is powered by a 13 hp (9.7 kW) gasoline engine and efficiently delivers a mud slurry to the rig to aid in drilling certain conditions. The rig generator and crew comfort area is also housed in this unit.
4000	Ditch Witch JT-4020 Mach1 Directional Drill. This highly efficient setup is powered by a 185hp John Deere diesel engine. Features such as the automatic pipe-loader and all terrain track system improve the versatility and performance of this rig. The on-board mud pump has the capacity to run in mud-motor conditions.
4001	Mack Water truck. The addition of this piece of equipment to the rig setup reduces the burden on the client to provide water services when water is not available from the crossing site. The 12m3 capacity keeps the rig working and rarely waiting on H2O.

- Preventative Maintenance Program
- 40,000 lb rig setup
- 27,000 lb rig setup
- Mud mixing systems
- Mud motor ready
- In Field Digital Planning and As builds.
- Water Truck
- Low Impact Track System

High Energy Horizontal Directional Drilling Inc.
5108-50th Avenue, Wetaskiwin, Alberta

Key Projects

Past Performances

High Energy's clients all have one thing in common: they keep coming back. Of our core group of clients, over 85% continue to call us for their crossing needs. Below is an example of the type of projects we tackle.

Real Resources - Two Creeks Pipeline Project.

Completion of over 3000 meters of crossings of various obstacles including; creeks, draws, hotlines, and roads using various methods of drilling including mud-motor crossings of 6" and 4" steel pipe.. All on time and all on budget.

Galloway Oilfield - Rangeland Pipeline Project.

Completion of multiple crossings with pipe sizes ranging from 12" to 8". Once again all crossings were completed on time and with maximum value for our client.

Devon Canada - Cabin to Leland Pipeline Project.

Completion of multiple crossings of 10" pipe. Mud-motoring used extensively throughout this project. Through good use of High Energy on multiple small, but tough, crossings

Other Valued High Energy Clients.

- Fairborne Energy
- Penn West Energy
- Lincoln Co. Oilfield
- CWL Construction
- Samson Canada
- Sequoia Energy
- Diamond Tree
- JED Oil
- Anderson Energy
- Chamaelo Energy
- Temple Energy

High Energy Horizontal Directional Drilling Inc.
5108-50th Avenue, Wetaskiwin, Alberta

Quick Facts

High Energy Overview

High Energy is a Horizontal Directional Drilling firm offering all of the things you would expect: great drilling services, superior safety, and experienced crews. Unlike others however, we offer something else- Client Care. We want to make crossings work for you... so that we can work for you.

- Product Lines From 1" to 16" (up to 36" through Precise Crossings Partnership)
- Digital Planning - CAD As builds
- COR Safety Program
- Industry Best Client Care Principles
- Modern, Well Maintained Equipment
- 15 Years Experience Within Management Group (2 people)
- Leading Industry Value
- HDD Design and Analysis

•15 years experience in all types of HDD projects.

•Management group dedicated to the 'Client Care' principal.

•Unmatched safety record.

•COR Recognized Safety Program (COR# 20070510-4007)

•Mud-motor ready and experienced.

•Top Notch Client Care Program

High Energy Horizontal Directional Drilling Inc.
5108-50th Avenue, Wetaskiwin, Alberta

1-877-352-4727 [Free](#) - 780-352-4757 [Fax](#) - info@highenergyinc.ca [Email](#) - www.highenergyinc.ca [Web](#)